

EP Infrastructure

2023 Results Call

26 March 2024

Gary Mazzotti, Chief Executive Officer
Václav Paleček, Finance Director

www.epinfrastructure.cz



Disclaimer

IMPORTANT NOTICE

- ❑ You must read the following before continuing. The following applies to this document, the oral presentation of the information in this document by EP Infrastructure, a.s. (the “Company”) or any person on behalf of the Company, and any question-and-answer session that follows the oral presentation (collectively, the “Information”). In accessing the Information, you agree to be bound by the following terms and conditions.
- ❑ Further, no representation, warranty or undertaking, express or implied, is made as to, and no reliance should be placed on, the fairness, accuracy, completeness or correctness of the Information or the opinions contained therein. The Information has not been independently verified and will not be updated. The Information, including but not limited to forward-looking statements, applies only as of the date of this document and is not intended to give any assurances as to future results. The Company expressly disclaims any obligation or undertaking to disseminate any updates or revisions to the Information, including any financial data or forward-looking statements, and will not publicly release any revisions it may make to the Information that may result from any change in the Company’s expectations, any change in events, conditions or circumstances on which these forward-looking statements are based, or other events or circumstances arising after the date of this document. Market data used in the Information not attributed to a specific source are estimates of the Company and have not been independently verified. The Company expressly disclaims any obligation to prepare or present its financial results or any other information similar to the Information in the future, unless required by the applicable law or regulation to which the Company is subject.
- ❑ The Information contains forward-looking statements. All statements other than statements of historical fact included in the Information are forward-looking statements. Forward-looking statements give the Company’s current expectations and projections relating to its financial condition, results of operations, plans, objectives, future performance and business. These statements may include, without limitation, any statements preceded by, followed by or including words such as “target,” “believe,” “expect,” “aim,” “intend,” “may,” “anticipate,” “estimate,” “plan,” “project,” “will,” “can have,” “likely,” “should,” “would,” “could” and other words and terms of similar meaning or the negative thereof. Such forward-looking statements involve known and unknown risks, uncertainties and other important factors beyond the Company’s control that could cause the actual results, performance or achievements of the Company and its subsidiaries (collectively the “Group”) to be materially different from the expected results, performance or achievements expressed or implied by such forward-looking statements. Such forward-looking statements are based on numerous assumptions regarding the Group’s present and future business strategies and the environment in which it will operate in the future. Many factors may cause the Group’s results of operations, financial condition, liquidity, reserves and the development of the industry in which the Group competes to differ materially from those expressed or implied by the forward-looking statements. These factors include, among others (i) negative or uncertain global and regional economic conditions, (ii) further escalation of geopolitical conflicts, including the ongoing invasion in Ukraine and resulting in, among others, fluctuations in commodity prices, supply outages, expansion of sanctions regimes and other financial or business restrictions, (iii) failure to implement the Group’s key strategies, (iv) shortage in the supply of, or the unexpected increase in the price of, fuel and other raw materials, as well as transportation costs, (v) reliance on a small number of suppliers in the Group’s power and heat business, (vi) failure to successfully integrate and manage acquired companies, and (vii) changes in laws or regulatory schemes. Given these risks and uncertainties, you should not rely on forward-looking statements as a prediction of actual results.
- ❑ The Information contains certain measures that are not measures defined by International Financial Reporting Standards, namely, EBITDA, Adjusted EBITDA, Pro-forma Adjusted EBITDA, Adjusted Free Cash Flow, Cash Conversion Ratio, Group Cash Conversion Ratio, Gross Debt, Net Debt, Net Leverage Ratio (either on fully consolidated or proportionate basis). These measures do not represent the measures of the same or similar names as may be defined by any documentation for any financial liabilities of the Group.
- ❑ The Information should be read in conjunction with the “Annual Financial Report for the Year 2023” as published on www.epinfrastructure.cz.
- ❑ A credit rating is not a recommendation to buy, sell or hold any securities and may be revised, suspended or withdrawn by the rating agency at any time.

Presenting team



Gary Mazzotti

Chief Executive Officer, Vice-chairman of Board Of Directors

- *>30 years of experience*
 - *Serves on boards of other EPIF entities*
-



Václav Paleček

Finance Director

- *>10 years of experience*
 - *Serves on boards of other EPIF entities*
-

Agenda

- 1) Executive summary
- 2) Group performance
- 3) Financial profile update
- 4) Business segment highlights
- 5) Wrap-up
- 6) Appendix



Executive summary

- ❑ **EP Infrastructure** ("EPIF" or together with its subsidiaries the "**Group**" or the "**EPIF Group**") is a leading Central European group which operates traditional energy infrastructure assets
- ❑ EPIF's core activities are transmission, distribution and storage of gas, distribution of electricity and provision of district heating
- ❑ EPIF assets are predominantly located in Slovakia and the Czech Republic (low-risk and developed countries), while being also present in Germany
- ❑ EPIF's strategy is to operate **regulated and/or long-term contracted assets which have a critical feature of converting a substantially higher part of their operating result into free cash flow** than its peers. The primary reason for the strong cash conversion ability is the low Capex intensity. This is driven by (a) excellent conditions of the assets underpinned by effective maintenance, (b) high cost to build and low cost to operate (gas transmission, gas storage and heat infra segments), (c) use of modern durable materials (gas distribution segment), and (d) large investments made by previous owners (electricity distribution segment)
- ❑ In FY 2023 EPIF Group reached the following results:
 - **Consolidated Revenues** of **EUR 4,268 million** (EUR 4,004 million in FY 2022)
 - **Adjusted EBITDA²** of **EUR 1,217 million** (EUR 1,455 million in FY 2022)
 - **Proportionate Adjusted EBITDA³** of **EUR 699 million** (EUR 875 million in FY 2022)
 - **Proportionate Net Leverage Ratio⁴** of **2.70x** (2.90x in FY 2022)
 - **Adjusted Free Cash Flow⁵** of **EUR 1,016 million** (EUR 736 million in FY 2022)
 - **Group Cash Conversion Ratio⁶** at approx. **83%** (51% in FY 2022)
- ❑ The results for the year 2023 were impacted by one-off risk mitigating measures taken by eustream. Despite challenges posed by results of COVID-19 pandemic and geopolitical tensions, such as the conflict in Ukraine, the Group's **resilience**, bolstered by the **diversification** across gas and power value chains, was evident

1. All figures in the presentation calculated on fully consolidated basis, unless explicitly stated otherwise

2. Adjusted EBITDA represents profit (loss) for the period before income tax expenses, finance expense, finance income, change in impairment losses on financial instruments and other financial assets, share of profit (loss) of equity accounted investees, net of tax, gain (loss) on disposal of subsidiaries, depreciation of property, plant and equipment and amortisation of intangible assets, negative goodwill and impairment charges relating to property, plant and equipment and intangible assets, adjusted for certain items. For more details see slides 32-34

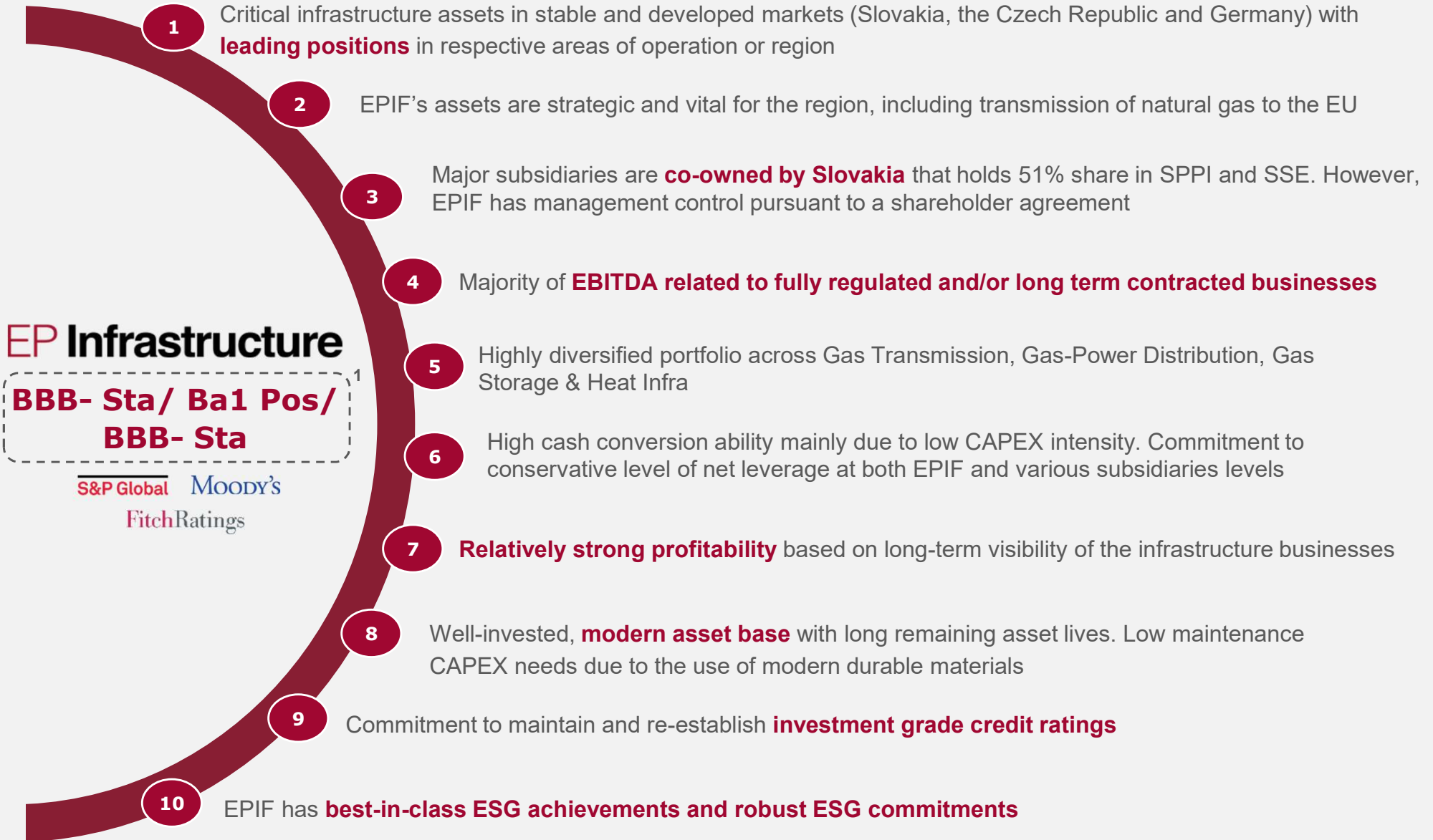
3. Proportionate Adjusted EBITDA represents Adjusted EBITDA, taking into consideration the proportionate ownership of EPIF in its subsidiaries

4. Net Leverage Ratio represents Net Debt divided by Adjusted EBITDA. Proportionate Net Leverage Ratio represents Net Leverage Ratio, taking into consideration the proportionate ownership of EPIF in its subsidiaries. For Net Debt definition see slide 36

5. Adjusted Free Cash Flow represents Cash generated from (used in) operations, disregarding Change in restricted cash, less Income taxes paid, Acquisition of property, plant and equipment, investment property and intangible assets and Purchase of emission rights as presented in the Consolidated statement of cash flow, adjusted for selected items. For more details see slide 35

6. Group Cash Conversion Ratio represents Adjusted Free Cash Flow divided by Adjusted EBITDA

Key Company's Highlights



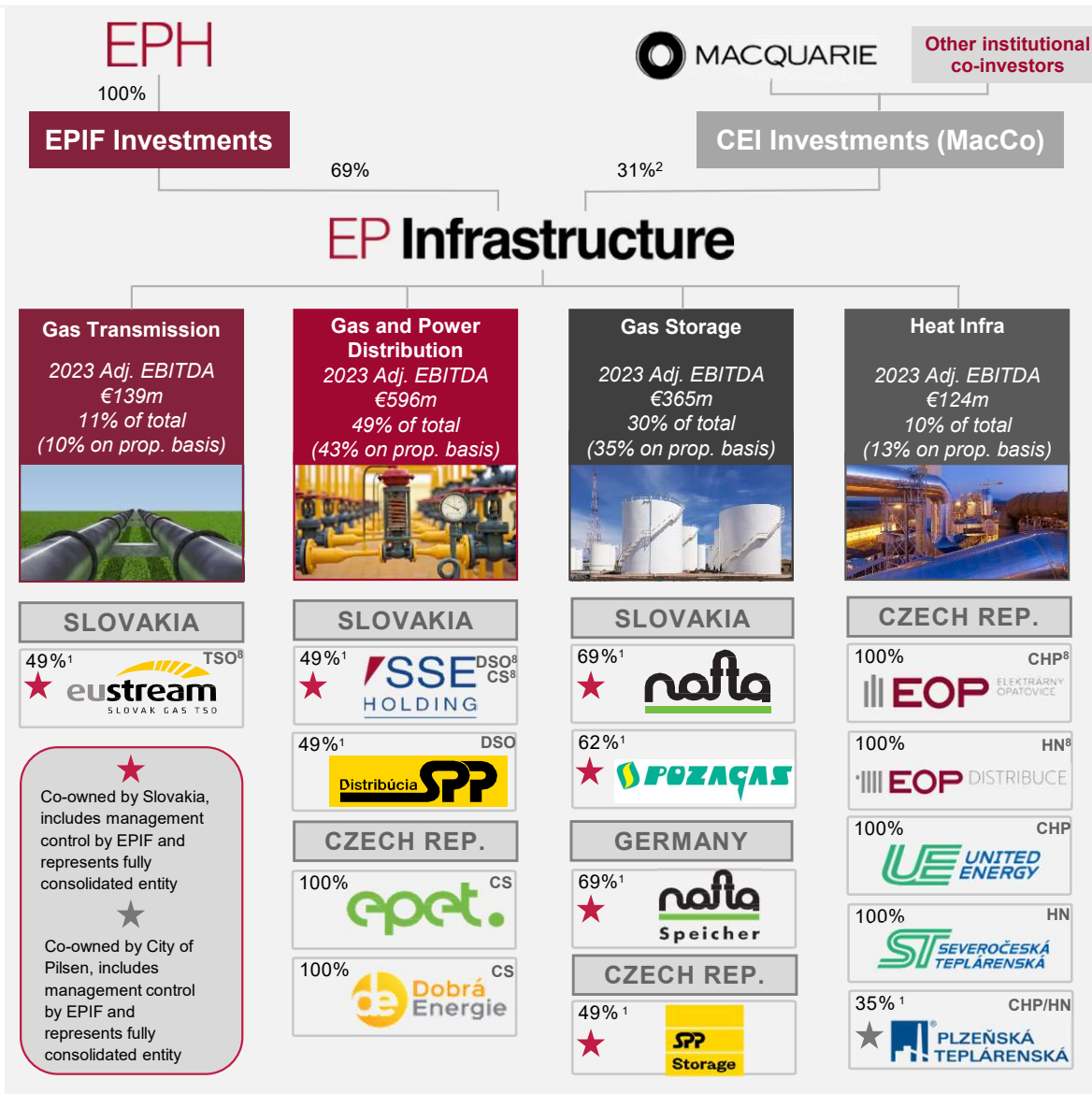
1. Based on the latest credit rating reports as of 25 April 2023, 26 January 2024 and 12 October 2023, respectively

Agenda

- 1) Executive summary
- 2) **Group performance**
- 3) Financial profile update
- 4) Business segment highlights
- 5) Wrap-up
- 6) Appendix



EPIF Group overview



EPIF group overview

- EPIF is an essential and diversified infrastructure group in the EU. EPIF owns and operates its **critical infrastructure assets** in stable and developed markets of Slovakia (A+ / A2 / A-)³, the Czech Republic (AA- / Aa3 / AA-)³ and Germany (AAA/Aaa/AAA)³
- All major EPIF assets have **stable and resilient operating performance**, leading market positions and a track record of operational excellence
- EPIF's assets are strategic and vital for the region; **major subsidiaries** are **co-owned by the Slovak Republic**, whereby EPIF keeps management control over all its subsidiaries
- The strategic composition of the Group's assets with **strong diversification** and **natural hedges** between segments enhancing EPIF's stability and resilience
- In April 2023, **S&P** issued a rating update with revised **outlook to Stable** (from Negative); in October 2023, **Fitch** updated the **outlook to Stable** (from Negative); in January 2024, **Moody's** changed the **outlook to Positive** (from Negative)

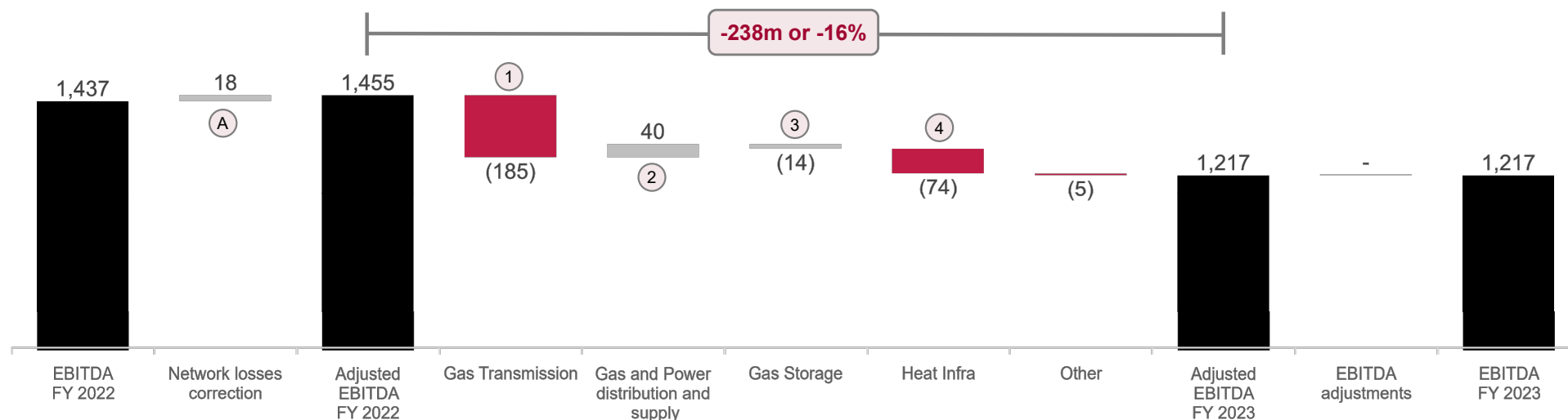
in €m	2023	2022	2021	2020	2019	2018	2017
Adjusted EBITDA ⁴	1,217	1,455	1,278	1,526	1,606	1,466	1,461
Prop. Adjusted EBITDA ⁴	699	875	686	833	884	818	800
Prop. PF Adjusted EBITDA ⁴	-	-	-	766	-	-	-
Adjusted Free Cash Flow ⁴	1,016	736	785	1,046	1,107	1,030	1,045
Group Cash Conversion ratio ⁵	83%	51%	61%	69%	69%	70%	72%
Prop. Net debt ⁴	1,884	2,534	2,924	3,104	3,481	3,447	3,597
Prop. Net Leverage Ratio ⁴	2.70x	2.90x	4.26x	4.05x ⁷	3.94x	4.21x	4.50x ⁶

1. Non-controlling shareholders are: Slovak government (eustream, SPPD, SSE, SPPS), Slovak government and other minor shareholders (Nafta, Nafta Speicher and Pozagas) and City of Pilsen (Plzeňská teplárenská)
 2. MAM Co. and several other institutional co-investors co-own CEI Investments (an SPV established to hold the stake in EPIF); MAM has the controlling rights and the MacCo is the only party to the SHA with EPH
 3. All ratings as per S&P / Moody's / Fitch
 4. Refer to Appendices for definitions of Adjusted EBITDA, Proportionate Adjusted EBITDA, Proportionate Pro-forma ("PF") Adjusted EBITDA, Adjusted Free Cash Flow, Proportionate Net debt and Proportionate Net Leverage Ratio (slides 32-36)
 5. Group Cash Conversion Ratio represents Adjusted Free Cash Flow divided by Adjusted EBITDA
 6. Prior to implementation of dividend lock up covenant
 7. FY 2020 Proportionate Net Leverage Ratio calculated using Pro-forma Adjusted EBITDA reflecting disposals of PT Group and BERT in Q4 2020. For Pro-forma Adjusted EBITDA definition see slide 32
 8. TSO = Transmission system operator; DSO = Distribution system operator; CS = Commodity supply; CHP = Combined heating plant; HN = Heat network

Overview of 2023 results

Adjusted EBITDA bridge 2023 vs. 2022

Indicative Adjusted EBITDA bridge¹ (mil. EUR)



- ① The adverse Adjusted EBITDA variance in the **Gas transmission** segment (-57% to EUR 139m) was mainly driven by one-off risk mitigating measures, including an impairment charge to the gas inventory, coupled with decreased gas prices. The measures have been taken to manage, among other factors, the risk of a complete interruption of Russian gas flows. Additionally, FY 2023 EBITDA was negatively impacted by further decreased flows of Russian gas to Europe in 2023, resulting in a lower volume of natural gas transported via eustream's network (-39%), which in turn also negatively affected the volume of gas in-kind sold
- ② **Gas and Power Distribution** segment achieved an improvement in Adjusted EBITDA (+7% to EUR 596m). Slovak supply business benefited from better supply margins and reduced costs of imbalances compared to 2022, a period during which the segment was negatively impacted by fulfilling supplier of last resort obligations at high spot prices. Despite a decline in distributed volumes in 2023, both distribution entities delivered robust performance. Gas distribution volumes decreased from 48.3 TWh to 45.5 TWh, mainly among large customers with lower unit prices, resulting in a relatively marginal financial impact. Similarly, electricity distribution volumes decreased to 6 TWh, implying 5% year-on-year volume decrease. However, SSD, the monopoly distributor in central Slovakia, improved its performance due to an enhanced network losses margin. Overall, the distribution companies' underlying business remains fundamentally stable and resilient, with a significant portion of distribution tariffs fixed under the new regulatory period that commenced in January 2023
- ③ **Gas storage** segment recorded yet another strong results in 2023, confirming its importance in the period of supply insecurity and price volatility. The segment's resilience was evident in the face of high demand for services and elevated storage prices, with Adjusted EBITDA remaining broadly stable at EUR 365 million, realising only a modest decline of 4%
- ④ The **Heat Infra** segment reported a decline in Adjusted EBITDA (-37% to EUR 124m) on the back of the relative normalization of power market conditions in 2023. This decline was mainly attributable to a decrease in heat offtakes and reduced power spreads, leading to a decline in ancillary services related to grid-balancing power production. Heat offtake experienced a 5% drop compared to prior year, primarily driven by warmer weather²
- (A) Adjustment for correction of excessive cost of network losses incurred³ that were fully acknowledged by the Regulator

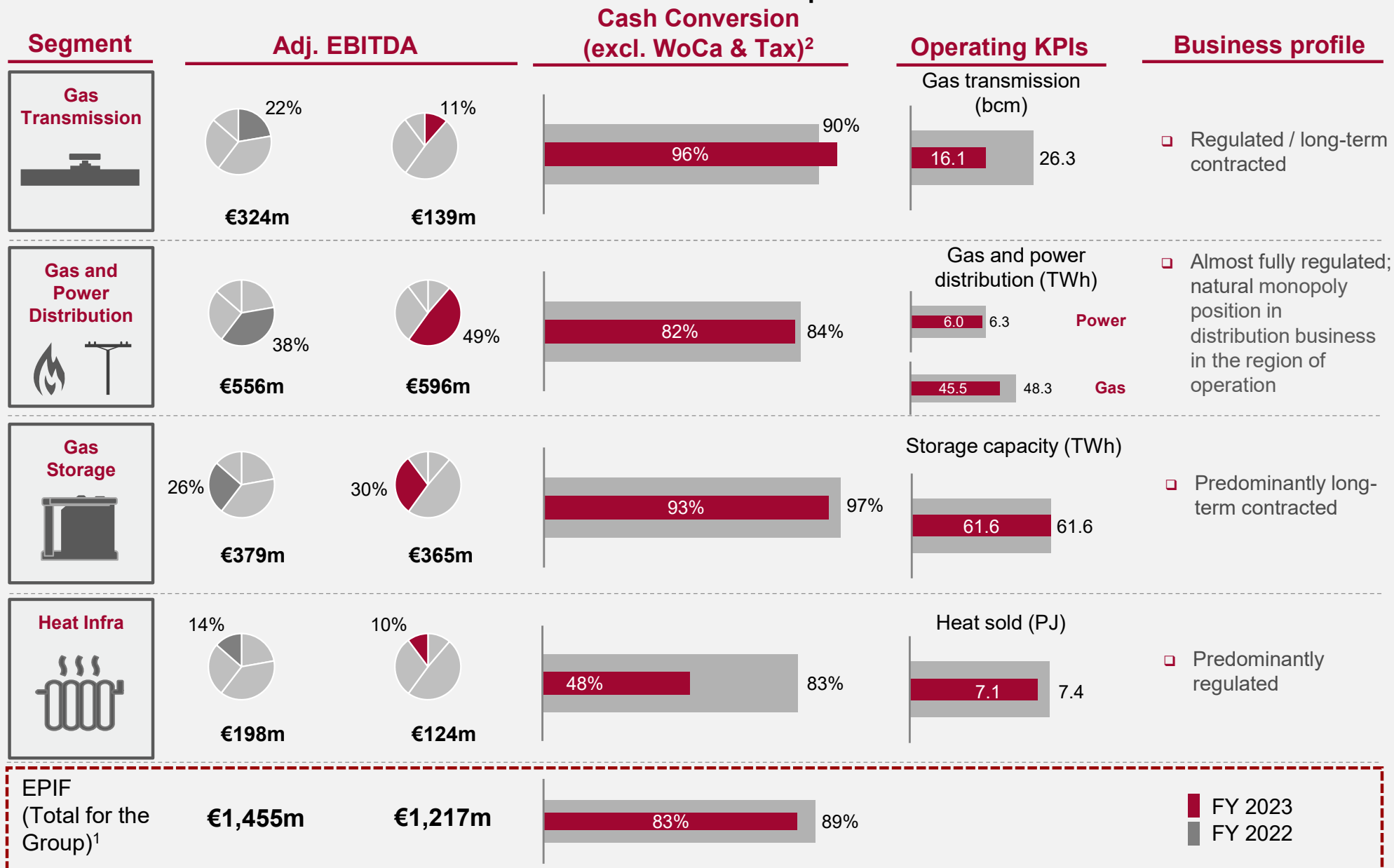
1. Figures might not add up due to rounding

2. 2022: 3,294 day-degrees, 2023: 3,074 day-degrees. Day-degrees measure integrates the difference between reference indoor temperature and outdoor temperature over the given period of time. A higher value indicates that the temperature in the given period was below the reference temperature for a longer period of time. Day-degrees relate to all areas in the Czech Republic where EPIF delivered heat in 2023

3. For further details please see the definition of Adjusted EBITDA on slide 32

Large and diversified portfolio of strategically-important infrastructure assets, under stable regulatory environment and/or long-term contracts

FY 2022 and FY 2023 comparison



1. Total figure includes also other operations and holding expenses of the Group (segments Other and Holding entities)

2. Cash Conversion (excl. WoCa & Tax) represents Adjusted EBITDA less CAPEX (Acquisition of property, plant and equipment, investment property and intangible assets (without emission allowances, right-of-use assets and goodwill) as presented in the Operating segments information in the Consolidated financial statements of the Group) divided by Adjusted EBITDA

In 2023, EPIF reinforced its transition strategy by robust commitments and a Green Finance Framework to link future financing to its transition

Robust transition strategy

EPIF has established a robust decarbonization strategy across its asset portfolio

- ❑ EPIF has clearly defined roles for all its assets in a fully decarbonized energy system
- ❑ Key decarbonization pillars are (i) phase out of lignite, (ii) adaptation of the gas infrastructure for renewable gases, and (iii) robust Leak Detection and Repair programs to control methane leakage
- ❑ During 2023, EPIF has advanced with preparation of conversion of its cogeneration heating plants. EPIF plans to invest around EUR 1.3bn into hydrogen-ready CCGT units and waste incinerator plants, of which EUR 0.7bn is expected to be covered by investment subsidies from the Modernization Fund (with all subsidy applications already submitted, and some approved)
- ❑ Hydrogen-related projects in place across gas midstream and downstream infrastructure - project Henri at Nafta aimed at identification of suitable sites for hydrogen storage and project H2I-TR at eustream aimed at repurposing one gas pipeline for transit of pure hydrogen have been granted the IPCEI¹ status

Science-aligned commitments²

In May 2023, EPIF supported its strategy by a set of medium-term and long term-targets

- ❑ Achieve carbon neutrality by 2040 and net zero operations by 2050
- ❑ Phase out coal by 2030
- ❑ Reduce CO₂ emissions by 60% by 2030 compared to the 2022 level
- ❑ Reduce methane emissions in line with the Global Methane Pledge by 2030
- ❑ Address the Scope 3 footprint by commencing its disclosure for the year 2024

Green Finance Framework³

In line with its public commitment, EPIF has established the Green Finance Framework to link the future financing to execution of its transition plan

- ❑ The eligibility criteria in the framework closely follow the substantial contribution criteria of the EU Taxonomy
- ❑ Key eligible assets represented by gas and power distribution grids and district heating systems (cogeneration plants including adjacent heating networks)
- ❑ EPIF solicited Second Party Opinions (“SPO”) on its framework from (i) Shades of Green, now part of S&P Global which assigned the Light Green shading to the framework and (ii) Sustainable Fitch which assigned a qualification of “Good” to the framework. Both SPO providers consider the framework as aligned with the ICMA Green Bond Principles
- ❑ EPIF issued its inaugural green instrument in March 2024 – a green Schuldschein loan of EUR 285m, which will be allocated against green eligible projects. The respective allocation report with a green balance sheet and the impact report will be disclosed in the course of 2024

1. Important Projects of Common European Interest

2. Please note that EPIF cannot obtain external certification from the Science Based Targets initiative on its targets as EPIF is considered as an Oil & Gas company. SBTi is preparing a dedicated methodology for the Oil & Gas sector

3. The Green Finance Framework and the Second Party Opinions can be accessed here <https://www.epinfrastructure.cz/en/sustainability/green-finance-framework/>

ESG Pillars and Strategy

ESG matters are monitored and managed at the Group level

S&P Global
Ratings

63/100 ESG Rating

EPIF was the first company in the CEE to obtain an ESG Rating by S&P (in 2020). Last rating update was performed in November 2022¹



19.8 ESG Risk Rating

The rating confirms EPIF's position in the low-risk category. Last full rating update was performed in October 2023, securing EPIF 12th position out of 104 companies within the multi-utilities sector

	<p>Commitment to low carbon business model</p>	<ul style="list-style-type: none"> EPIF believes that its energy infrastructure will be critical in the transition to a zero-carbon energy system. EPIF has developed robust decarbonisation strategy with clearly defined roles for each asset in a zero-carbon world Key pillars of EPIF's transition strategy are (i) adaptation of the gas infrastructure for renewable gases such as hydrogen or biomethane, (ii) robust Leak Detection and Repair programs to control methane leakage in the transitional period when gas is still being used and (iii) replacement of lignite in district heating with a balanced mix of gas-fired plants with hydrogen-ready turbines, biomass units and waste incinerator plants In May 2023, EPIF reiterated its carbon neutrality target by 2040 and announced its ambition to achieve net zero operations by 2050. EPIF aims to achieve 60% reduction in CO₂ emissions by 2030 compared to the 2022 level and 30% reduction in methane emissions by the same year in line with the Global Methane Pledge EPIF has established a Green Finance Framework to link the proceeds from future financing with net-zero aligned assets in its portfolio
	<p>Social responsibility</p>	<ul style="list-style-type: none"> Health and safety of employees and contractors a top priority with detailed central oversight from EPIF Responsible marketing approach, providing all relevant information regarding offered services Throughout 2023, the EPH Foundation, of which EPIF is one of key benefactors, distributed nearly EUR 1.2 million to support programs in areas of education, culture, health and sport, disadvantaged groups and regional development
	<p>Transparent corporate governance</p>	<ul style="list-style-type: none"> EPH/MAM Shareholders' Agreement protects minority shareholder rights, and outlines clear corporate governance and approval of capital structure, including financial policy The governance of EPIF and its sub-holdings is based on a two-tier management structure comprising the Board of Directors and the Supervisory Board Since August 2021, Gary Mazzotti has been in the role of EPIF CEO, replacing Daniel Křetínský who remains Chairman of the Management Board. Gary Mazzotti also holds a parallel role of ESG Officer

1. The ESG evaluation product from S&P was discontinued towards the end of 2023. EPIF will not have the option to update this rating and will present it as a point-in-time score. Going forward, EPIF will explore options for alternative ESG rating products

Value-driven management team with proven track record

Senior Management

 = today's speakers



Gary Mazzotti

Deputy Chairman of EPIF Management Board, CEO

- Management Board member
- 35 years of experience
- Serves on boards of other EPIF's entities



David Onderek

Director of Heat Infra

- >25 years of experience
- Serves on boards of other EPIF's entities



Daniel Křetínský

Chairman of EPIF Management Board

- Chairman of EPH
- >20 years of experience



Martin Bartošovič

Director of Gas Storage

- >25 years of experience
- General Director of NAFTA



Václav Paleček

Finance Director

- >10 years of experience
- Serves on boards of other EPIF's entities



František Čupr

Director of Gas and Power Distribution

- >25 years of experience
- Chairman of the BoD of SPP-D and SSD



Peter Ďurík

Head of Financing

- ca. 10 years of experience



Tomáš Mareček

Director of Gas Transmission

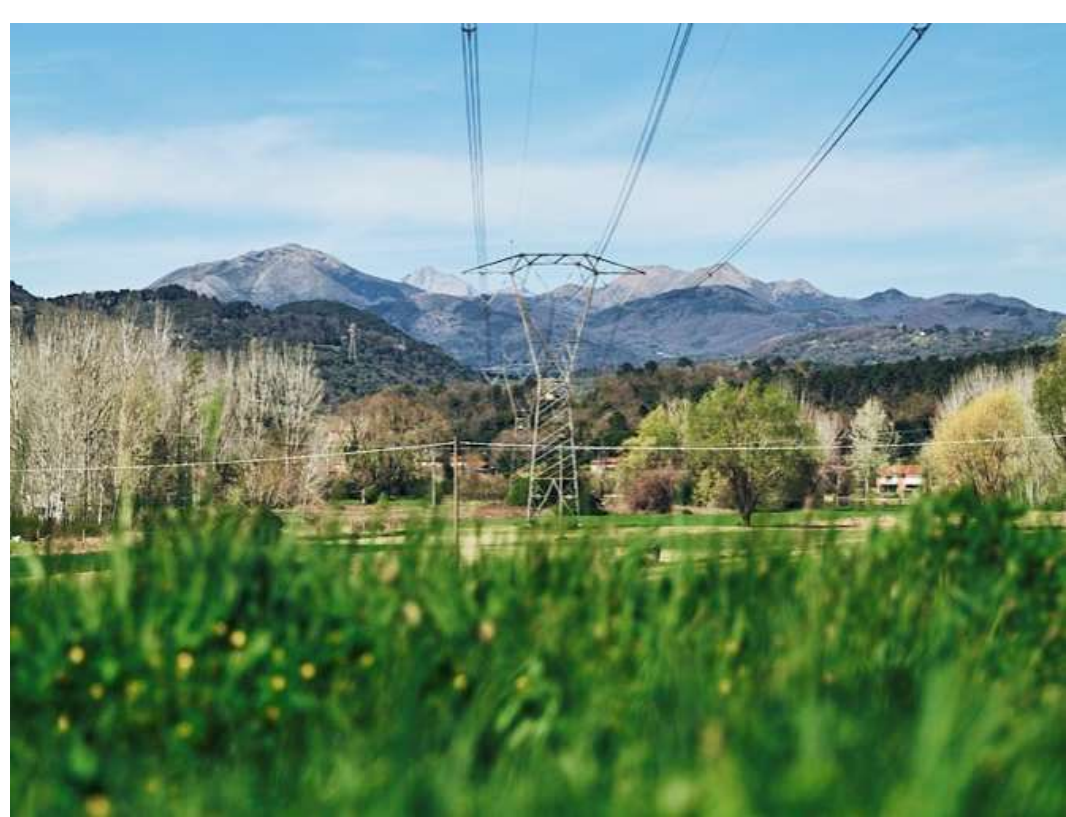
- >20 years of experience
- Chairman of the BoD of eustream

Strong and transparent corporate governance

- ❑ Strong and well-established **Senior Management** team with track record of operating companies' management within the EPIF Group
- ❑ The **Senior Management** is fully supported by the Board of Directors, especially by Daniel Křetínský for strategic initiatives and decisions and by Gary Mazzotti with his significant long term experience in the CEE Region and the sector
- ❑ The **Supervisory Board**, responsible for monitoring the work of the Board of Directors, is a well-balanced body comprised of members with extensive expertise from different areas of the energy value chain

Agenda

- 1) Executive summary
- 2) Group performance
- 3) **Financial profile update**
- 4) Business segment highlights
- 5) Wrap-up
- 6) Appendix



Decreased performance primarily affected by risk mitigating measures

	31 Dec 2022	In EUR mil.	31 Dec 2023
PL	1,455	Adj. EBITDA ¹	1,217
	(18)	Adjustments ²	-
	1,437	EBITDA	1,217
	(492)	D&A and Imp.	(459)
	945	EBIT	758
	9	Net finance result	(35)
	(253)	Tax expense	(188)
	701	Profit after tax	535
CF	(165)	CAPEX ³	(202)
	(249)	Change in margining deposits	274
	736	Adjusted FCFF ⁴	1,016

D&A and Impairment

D&A broadly stable as significant part of the PPE (gas pipelines) has long useful life; 2022 includes goodwill impairment of EUR 34m related to Elektrarny Opatovice, a.s.

Net finance result

Lower result in 2023 as the previous year was positively impacted by accounting gain on revaluation of IRS derivatives; weighted average interest rate on bonds of 1.8%

Tax expense

Primarily affected by lower tax base (in line with decreased EBITDA), while the effective rate stands at 26.1% (26.6% in 2022)

Adjusted FCFF

2023 FCFF significantly affected by returned margining deposits, partially offset by higher Tax paid, Capex and Purchase of EUAs

The **Group Cash Conversion Ratio⁵** reached ca. 83% in 2023 (51% in 2022)

1. For definition of Adjusted EBITDA please see slide 32. For further details about Adjusted EBITDA development please see slide 9

2. Adjustments are further described on slide 9

3. Capital expenditures represents cash outflow for acquisition of property, plant and equipment, investment property and intangible assets as presented in the consolidated statement of cash flows of the Group

4. For definition of Adjusted FCFF please see slide 35

5. Group Cash Conversion Ratio represents Adjusted Free Cash Flow divided by Adjusted EBITDA

The healthy and well-managed balance sheet

In EUR mil.	31 Dec 2022	31 Dec 2023
Total assets	12,967	12,911
PPE, Intangibles and GW	9,892	10,279
Fin. instruments (assets)	227	93
Cash and cash equiv.	1,548	1,695
Other assets	1,300	844
Total equity	4,575	5,651
Total liabilities	8,392	7,260
Fin. instruments (liabilities)	621	61
Gross debt ¹	4,601	3,844
Provisions	462	456
Deferred tax	1,688	1,804
Other liabilities	1,020	1,095

Cash and cash equivalents

The majority of 2023 Adjusted FCFF² utilised to reduce and service external debt, while the balance has been withdrawn and not distributed to EPIF shareholders

Other assets

Includes margining balance of EUR 37m (EUR 311m as of 31 Dec 2022)

Total equity

Reflects a revaluation gain of EUR 478m (net of deferred tax) of SPPD's gas distribution pipelines

Fin. Instruments

Decreased balances due to both volume and price effect on commodity derivatives and price effect on IRS derivatives, all held for risk management purposes

Gross debt¹

Lower due to repayments of EPIF and Opcos loans of EUR 554m and a purchase and cancellation of EPIF 4/2024 bonds in the amount of EUR 203m

Deferred tax

Increase mainly due to EUR 151m deferred tax impact stemming from revaluation of gas distribution pipelines³

1. Represents principal owed and lease liabilities disregarding accrued interest and unamortized fees. For further details related to gross debt please see slide 20

2. For Adjusted Free Cash Flow definition see slide 35

3. The gas transmission pipelines of eustream and the gas distribution pipelines of SPPD are carried at a revalued amount (fair value as of the date of revaluation less subsequent depreciation and impairment) following the IAS 16 revaluation model, which is applied for the Group's consolidated financial statements since 2019 for eustream's pipelines and 2020 for SPPD's pipelines

Key financing developments and Subsequent events

Key financing developments

- ❑ In 2023, companies co-owned by Slovakia **paid dividends** in the total amount of **EUR 376m (EUR 184m EPIF share)**, of which **SSE** distributed **EUR 76m** and **SPPI** distributed **EUR 300m**. In addition, dividends of **EUR 82m** was transferred to EPIF through CGHI's ownership in **Nafta**. Overall, the dividends paid to minority shareholders across the Group **amounted to EUR 202m**
- ❑ During 2023, **SSE** repaid **EUR 100m** relating to **RCF** a **term loan** (maturing in June 2027)
- ❑ In the first half of 2023, **EPIF** voluntarily repaid its **EUR 400m RCF** (due in January 2025), which was drawn in 2022 to provide liquidity cushion
- ❑ During the second half of 2023, **EPIF** reduced total outstanding amount of its **2024 bond¹** by **EUR 203m** via (i) a fixed price **tender offer** announced in September (**EUR 152m**) and (ii) subsequent **secondary bond buy backs** realised in October-December (**EUR 51m**). All the acquired bonds have been cancelled. The nominal amount of EPIF 2024 bond thus decreased to EUR 547m as of 31 December 2023
- ❑ In November 2023, **Nafta** repaid its **term loan** of **EUR 44m** (maturing in January 2024)

Subsequent events

- ❑ In January 2024, **eustream's RCF** limits have been reduced from EUR 140m to **EUR 50m**
- ❑ In February 2024, **Nafta** concluded a new **EUR 200m RCF** with maturity in February 2029
- ❑ In March 2024, **EPIF prolonged** its **EUR 50m RCF** until April 2026
- ❑ In March 2024, **EPIF** has raised **EUR 285m** through **Schuldschein** loan agreements under German law issued in line with EPIF's green principles (so called "green Schuldschein"). The floating rate Schuldschein loan agreements have durations of three and five years. EPIF aims to allocate the proceeds from the Schuldschein loan agreements in accordance with its Green Finance Framework
- ❑ In March 2024, **SPPI** paid **a dividend of EUR 271m** (100% basis) to its shareholders

1. ISIN: XS1811024543

Conservative capital structure

Continued deleveraging to mitigate temporarily elevated business risks

Summary capital structure

Fully consolidated basis	31 Dec 2023
Gross debt ¹	3,844
Cash	1,695
Net debt	2,149
Adjusted EBITDA FY 2023 ³	1,217
Net debt / Adjusted EBITDA³	1.77x

Proportionately ² consolidated basis	31 Dec 2023
Gross debt ¹	2,989
Cash	1,105
Net debt	1,884
Adjusted EBITDA FY 2023 ³	699
Net debt / Adjusted EBITDA³	2.70x

1. Represents principal owed and lease liabilities disregarding accrued interest and unamortized fees

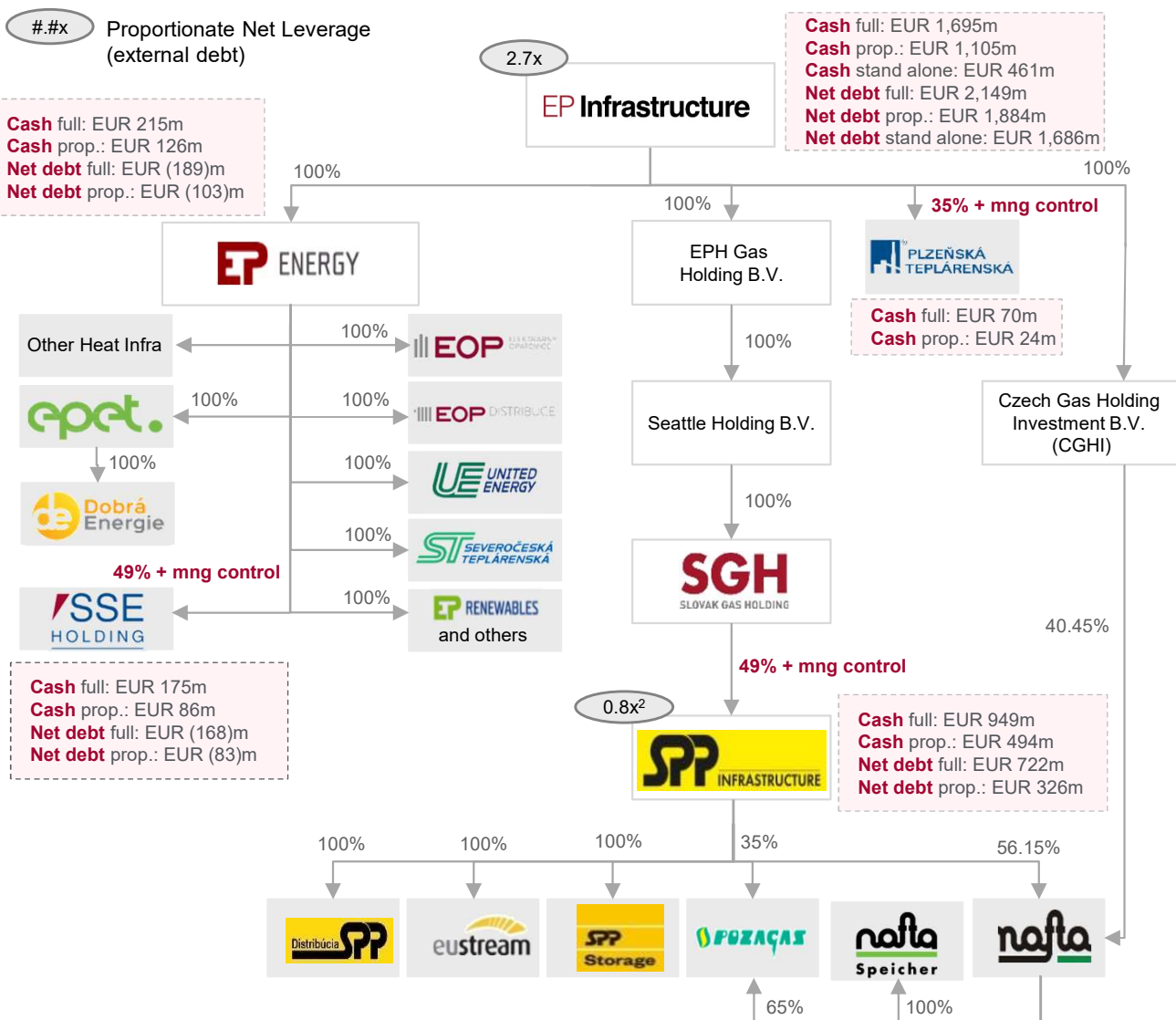
2. Calculated by taking into consideration the proportionate ownership of EPIF in its subsidiaries

3. Adjusted EBITDA represents profit (loss) for the period before income tax expenses, finance expense, finance income, change in impairment losses on financial instruments and other financial assets, share of profit (loss) of equity accounted investees, net of tax, gain (loss) on disposal of subsidiaries, depreciation of property, plant and equipment and amortisation of intangible assets, negative goodwill and impairment charges relating to property, plant and equipment and intangible assets, adjusted for certain items. For further details please see slide 32

EPIF financial policy

- EPIF has a stable financial policy established in the Shareholders' Agreement between EPH and MIRA further emphasized by the **dividend lock-up covenant of 4.5x Net Debt/EBITDA** (on proportionate basis) while the **provisional management target** updated in October 2022 is to maintain the ratio **below 3.5x** which is to apply until the market uncertainties subside
- EPIF is committed to maintaining a financial profile consistent with **investment-grade credit ratings**
 - Currently rated BBB- (stable outlook) by S&P's / Ba1 (positive outlook) by Moody's / BBB- (stable outlook) by Fitch
 - In addition to EPIF's overall leverage distribution limit, there are **limitations on leverage at operating subsidiaries**
 - At SPP-I and SSE, Net Debt/EBITDA limited to 2.5x under shareholders' agreement with the Slovak Republic
 - As of 31 December 2023, the EP Energy group was largely free of external debt
- EPIF's financial policy is supported by **robust corporate governance**, reinforced by MIRA's strong minority shareholder rights in the Shareholders' Agreement

Capital structure overview as of 31 December 2023 – external debt¹



Cash full: EUR 215m
 Cash prop.: EUR 126m
 Net debt full: EUR (189)m
 Net debt prop.: EUR (103)m

Cash full: EUR 1,695m
 Cash prop.: EUR 1,105m
 Cash stand alone: EUR 461m
 Net debt full: EUR 2,149m
 Net debt prop.: EUR 1,884m
 Net debt stand alone: EUR 1,686m

Cash full: EUR 70m
 Cash prop.: EUR 24m

Cash full: EUR 175m
 Cash prop.: EUR 86m
 Net debt full: EUR (168)m
 Net debt prop.: EUR (83)m

Cash full: EUR 949m
 Cash prop.: EUR 494m
 Net debt full: EUR 722m
 Net debt prop.: EUR 326m

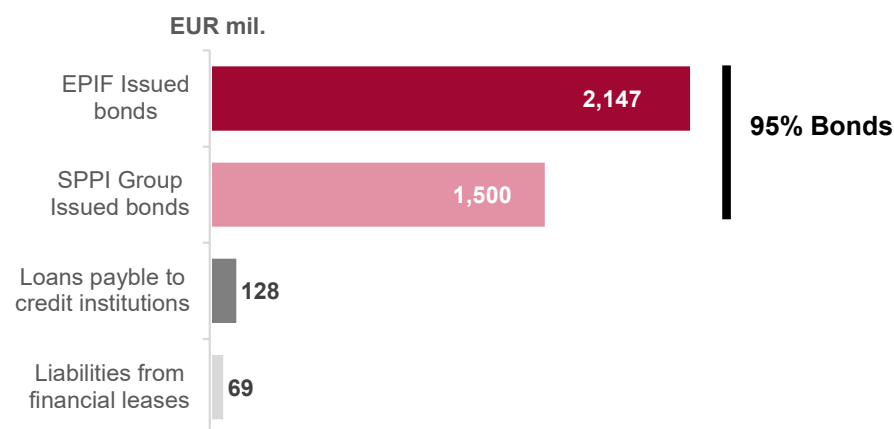
Key highlights

- Under standard circumstances, being a parent company, EPIF has very **strong access to all cash flow** generated across the group:
 - Fully unencumbered access to the cash flows generated by **EP Energy OpCos**, which are currently largely free of external debt
 - Track record of modest level of debt below 2.0x (0.8x as of 31 December 2023) at **SPPI group** entities allows for comfortable dividend upstreaming versus the shareholders' agreement (SHA) with a threshold at 2.5x
 - EPIF proportionately consolidated group is subject to **4.5x dividend lock-up**, limiting distribution from EPIF to its shareholders. Current dividend policy is however centered around EPIF's announced **aspiration to maintain its proportionate net leverage below 3.5x** which is to apply until the market uncertainties subside
- EPIF remains fully committed to maintaining and re-establishing (as applicable) the investment grade credit ratings of itself, SPPD and eustream

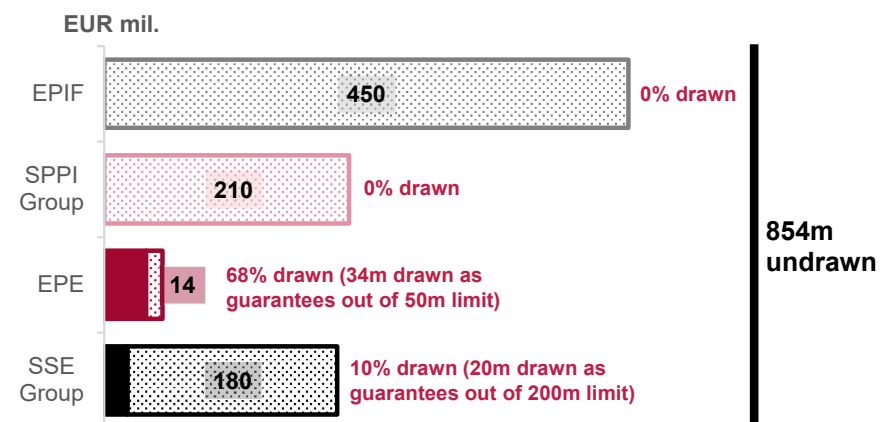
1. "Full" and "Prop." means Full consolidation and Proportionate consolidation
 2. Proportionate Net Leverage of SPPI reflects fully consolidated view from SPPI perspective

Gross debt and liquidity overview as of 31 December 2023

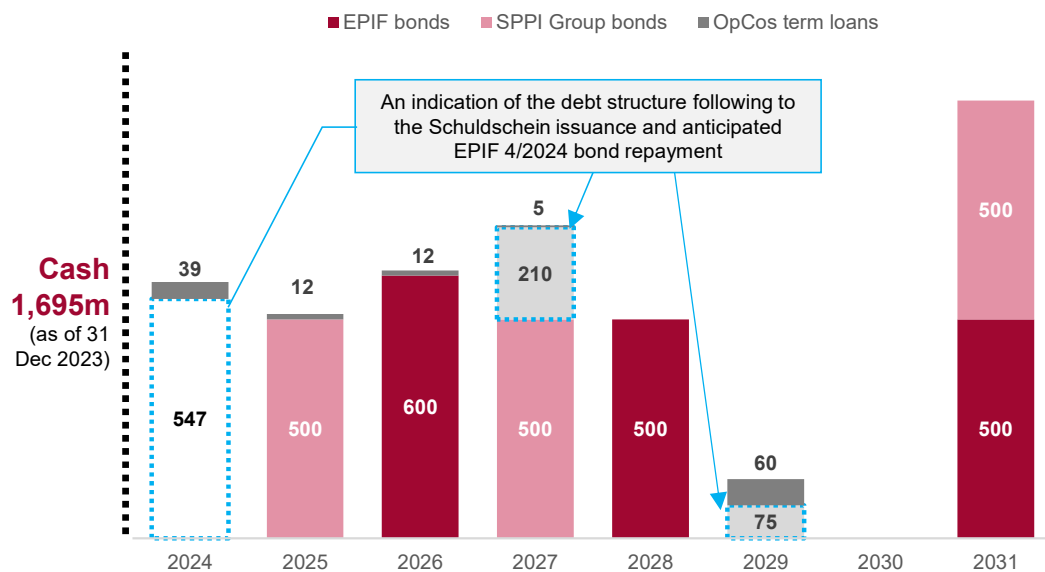
Breakdown by instrument



Overview of available liquidity



Debt maturity structure¹



1. Excluding lease liabilities

Commentary

- Almost all debt is **EUR denominated** (>99%)
- As of 31 December 2023:
 - EPIF Group had **EUR 854m of undrawn revolving credit lines** and **cash balance of EUR 1,695m**
 - Group's bonds and loans have a **weighted average tenor of 3.8 years**, while the **earliest major maturity repayment will be in April 2024**
- In January 2024, **eustream's RCF** limits have been reduced from EUR 140m to **EUR 50m**
- In February 2024, **Nafta** concluded a new **EUR 200m RCF** with maturity in February 2029
- In March 2024, **EPIF prolonged EUR 50m RCF** until April 2026
- In March 2024, **EPIF** has raised **EUR 285m** through **Schuldschein** loan agreements under German law issued in line with EPIF's green principles
- In March 2024, **SPPI** distributed a **dividend of EUR 271m** (100% basis), of which 49% belongs to EPIF

Financing strategy of the EPIF Group

Key policies

- ❑ Overall Group financing strategy and primary objective is **designed to capitalise on the Group's diversification and maintain/re-establish investment grade rating**. EPIF financing strategy is based on **3 fundamental pillars**:
 - **Proportionate Net Leverage Ratio** of the Group **below 3.5x** (target reduced from 4.5x in October 2022) which is to apply until the market uncertainties subside. Proportionate Net Leverage Ratio of the EPIF Group as of 31 Dec 2023 **stood at 2.7x**
 - **Majority of debt exposure in bonds** (or similar instruments, subject to market conditions), while retaining diversified sources of financing and optimizing interest costs. The share of bonds on Group's gross debt financing was 95%¹ as of 31 Dec 2023
 - **EPIF's share** on the overall proportionate Group's financing shall represent **app. 70% of the overall Group's proportionate gross debt** (72% share as of 31 Dec 2023)

Supporting financing measures

- ❑ To align with the primary objective, additional debt related **restrictions apply on subsidiaries levels** (according to respective Shareholder's Agreements):
 - ❑ **Maximum Net Leverage of 2.5x at SPPI Group level** with historical net leverage below 2.0x EBITDA (0.8x as of 31 Dec 2023)
 - ❑ **Maximum Net Leverage of 2.5x at SSE Group level** with historical net leverage negative or limited (negative as of 31 Dec 2023)
- ❑ The Group has established **a Green Finance Framework** for use within its capital structure strategy which may serve as a basis for the financing of any future eligible projects in line with the ICMA Green Bond Principles

Dividends

- ❑ The **last dividend** distributed to EPIF's shareholders of **EUR 100m paid in May 2021**. Subsequently, there has been no dividends as shareholders declared their aim to support the business at times of increased business and market uncertainty
- ❑ The Group has demonstrated **solid and stable results from 2021 to 2023, showcasing** its **resilience** mainly stemming from the **diversification** and natural hedges across segments. With the current **strong liquidity** position and the **Proportionate Net Leverage Ratio of 2.7x**, well below the announced target of 3.5x, dividend restoration is anticipated in 2024, likely through multiple payments to gradually approach the target level. This dividend decision factors in the near-term risks, particularly those associated with the gas transit contract between Russia and Ukraine expiring at the end 2024

1. Lease liabilities included in the Gross debt calculation

Agenda

- 1) Executive summary
- 2) Group performance
- 3) Financial profile update
- 4) **Business segment highlights**
- 5) Wrap-up
- 6) Appendix



Gas Transmission: key highlights

FY 2023 Adj. EBITDA²: EUR 139 million
 FY 2022 Adj. EBITDA: EUR 324 million



Gas Transmission

Gas storage

Distribution

Heat Infra



1. S&P / Moody's / Fitch

2. For definition of Adjusted EBITDA please see slide 32

3. Cash Conversion (excl. WoCa & Tax) represents Adjusted EBITDA less CAPEX (Acquisition of property, plant and equipment, investment property and intangible assets (without emission allowances and goodwill)) as presented in the Operating segments information in the consolidated financial statements of the Group) divided by Adjusted EBITDA

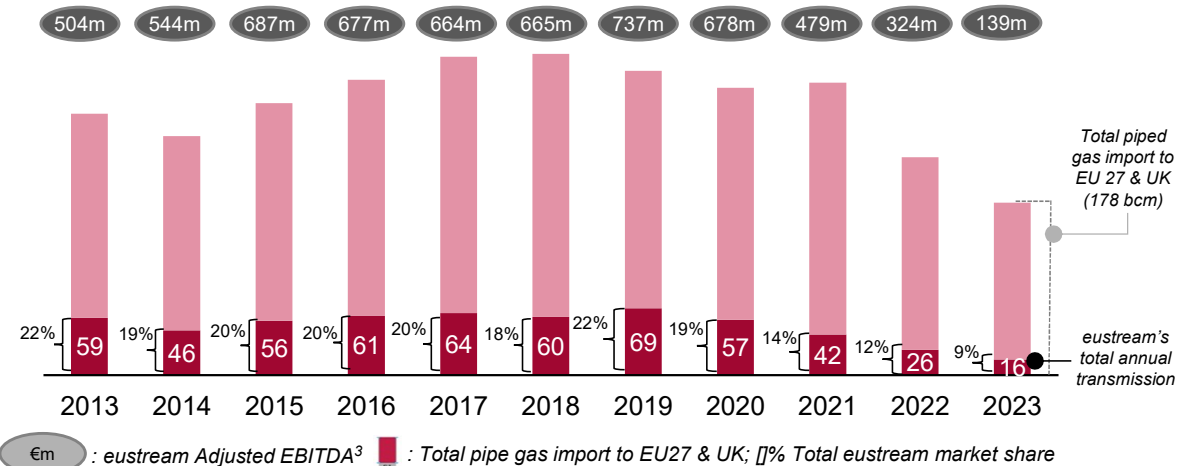
Eustream's network is well positioned for gas supply of Central and Southern Europe

Important role in European gas sourcing

- ❑ **Gas transmission infrastructure** in the European Union, important particularly for the Central and Southern Europe as natural gas is a significantly used fuel in these regions and eustream's network is well positioned to supply gas to these markets, **irrespective of the gas source and flows pattern**
- ❑ Large majority of 16.1 bcm of gas in FY 2023 (26.3 bcm in FY 2022) was transmitted under **long-term ship-or-pay contracts** to traditional markets of eustream
- ❑ **Before the war in Ukraine, ca. 70% of imported gas from the EU to Ukraine⁴** was transmitted via eustream's network (connection points Budince or Velke Kapusany)
- ❑ Since the start of the war in Ukraine, import needs of Ukraine significantly decreased, and the UA entry points have been also used to **transport gas to Ukrainian storages and subsequently back to the EU**
- ❑ Eustream receives **gas in-kind** from shippers as a pre-agreed fixed percentage of actual commercial gas flows for its operational and technical needs. Historically, in order to hedge **gas sale price**, eustream has been using financial derivatives. As of the date of this presentation, the **hedged position** of eustream in relation to gas in-kind is not significant



Stable market share and EBITDA development of eustream²



1. Source: Data of the operators of the individual entry points to Ukraine, ie FGSZ Zrt. (Hungary), GazSystem S.A. (Poland) and eustream a.s.

2. Total piped gas import to EU27 and the United Kingdom includes pipeline deliveries from Russia, Norway, Algeria and Libya. Total eustream share is calculated as eustream total annual transmission / Total piped gas import to EU27 and the United Kingdom

3. Source: EPIF consolidated financial statements. For definition of Adjusted EBITDA please see slide 32

4. Based on average imports in the period from 2014 to 2022

Gas Storage: key investment highlights

FY 2023 Adj. EBITDA¹: EUR 365 million
 FY 2022 Adj. EBITDA: EUR 379 million

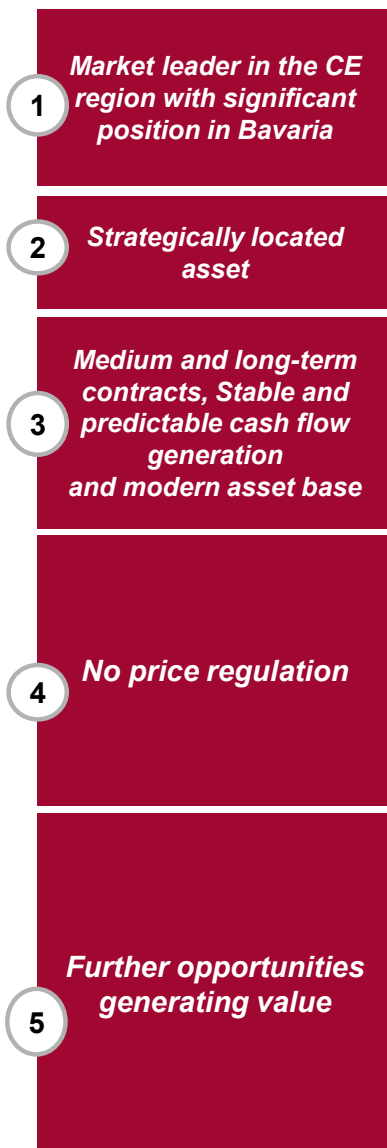


Gas Transmission

Gas storage

Distribution

Heat Infra



1 Market leader in the CE region with significant position in Bavaria

2 Strategically located asset

3 Medium and long-term contracts, Stable and predictable cash flow generation and modern asset base

4 No price regulation

5 Further opportunities generating value

- ❑ **Market leader** (24% share) in terms of capacity in the gas storage market **in the CE region** (the Slovak Republic, the Czech Republic and Austria; 42 TWh)
 - ❑ Dominant market position in Slovakia, with 100% market share
 - ❑ 8% market share in Germany through ownership of NAFTA Speicher with three gas storage facilities (20.0 TWh)
- ❑ **Strategic location** (CE with interconnection to VTP Austria/CEGH and THE gas hubs)
 - ❑ **Strategic role in ensuring energy security** (crucial in mitigating gas supply disruptions and balancing seasonality of demand with peaks in winter)
- ❑ Stable and predictable EBITDA secured via **long-term contracts**; as of 31 December 2023, ca. 86% of capacity contracted until season 2024/25, o/w ca. 71% on a long-term basis (51% until season 2026/27), incl. market indexed contracts
 - ❑ **Moderate investment needs** due to modern facilities and strong cost control on opex side
 - ❑ Track record of **superb Cash Conversion (excl. WoCa & Tax)**² - 93% in FY 2023 (FY 2022: 97%)
- ❑ No price regulation
 - ❑ According to the EU's **gas storage regulation**, underground gas storage facilities across the EU have to be filled up to at least 90% of its capacity by 1 November each year from 2023, adhering to intermediary targets for specific months. The regulation does not impose any direct obligations on the storage operators
 - ❑ Long-term contracts include either price adjustment formulas reflecting inflation or price formula based on actual market spreads and they are based on a store-or-pay principle
 - ❑ Short-term contracts mainly based on winter-summer spreads
- ❑ Strategic storage for security of supply needs, strongly supporting and benefiting from energy system transition
 - ❑ Provides upside in case of gas supply disruptions and increased gas price volatility, able to benefit from various spread types
 - ❑ Direct connection of SPP Storage to the Czech transmission system under construction
 - ❑ **Use of active trading strategies and innovative products**
 - ❑ The Group's gas storage facilities contain c. 25 TWh of cushion gas³ which may be produced at the end of the lifetime of the gas storage, subject to approval of the relevant regulatory agencies
 - ❑ Potential large scale green energy storage concept under analysis

1. For definition of Adjusted EBITDA please see slide 32

2. Cash Conversion (excl. WoCa & Tax) represents Adjusted EBITDA less CAPEX (Acquisition of property, plant and equipment, investment property and intangible assets (without emission allowances and goodwill) as presented in the Operating segments information in the consolidated financial statements of the Group) divided by Adjusted EBITDA

3. In principle cushion gas is the gas that is permanently stored in a gas storage and whose main function is to maintain sufficient pressure in the storage to allow for adequate injection and withdrawal rates. The Group estimates that the vast majority of the producible cushion gas may be produced within the first 5 years and the rest within additional 3-4 years. The production would require the Group to incur certain capex for the adjustments of the Group's technology, as well as yearly operating expenses that are estimated to be initially within standard levels of expenses during operations and to gradually decrease in subsequent years as the production volumes decrease. After the end of the production, the Group would also be required to incur certain decommissioning costs for which it has created provisions



Gas Transmission
Gas storage
Distribution
Heat Infra

Gas and Power Distribution (I/II): SPPD key highlights



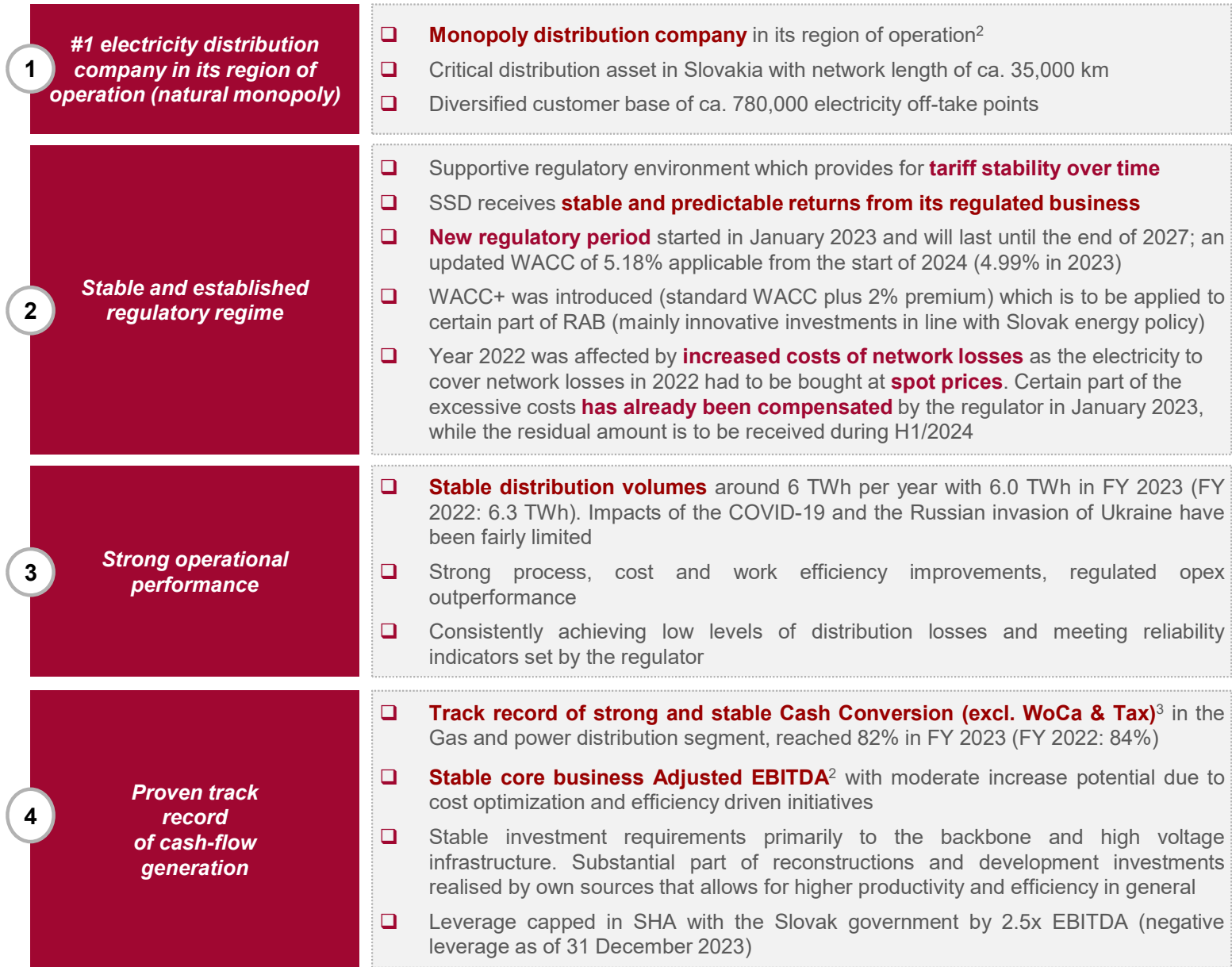
1. Represents Adj. EBITDA for the whole segment. For definition of Adjusted EBITDA please see slide 32

2. Cash Conversion (excl. WoCa & Tax) represents Adjusted EBITDA less CAPEX (Acquisition of property, plant and equipment, investment property and intangible assets (without emission allowances and goodwill) as presented in the Operating segments information in the consolidated financial statements of the Group) divided by Adjusted EBITDA



Gas Transmission
Gas storage
Distribution
Heat Infra

Gas and Power Distribution (II/II): SSE key highlights



1. Represents Adj. EBITDA for the whole segment. For definition of Adjusted EBITDA please see slide 32
 2. Refers to SSD which contributed a significant part of the SSE's Adj. EBITDA in FY 2023 and FY 2022 periods. Other SSE activities consist primarily of electricity supply
 3. Cash Conversion (excl. WoCa & Tax) represents Adjusted EBITDA less CAPEX (Acquisition of property, plant and equipment, investment property and intangible assets (without emission allowances and goodwill) as presented in the Operating segments information in the consolidated financial statements of the Group) divided by Adjusted EBITDA

Heat Infra: key investment highlights

FY 2023 Adj. EBITDA¹: EUR 124 million
 FY 2022 Adj. EBITDA: EUR 198 million



Gas Transmission
 Gas storage
 Distribution
Heat Infra



1	<p>Established operator of district heating with a key role for power grid stability</p>	<ul style="list-style-type: none"> ❑ Major Czech district heating operator, supplying heat to ca. 155k customers in major regional cities in the Czech Republic ❑ Important provider of grid balancing services to the Czech TSO ❑ Additional potential for small bolt-on acquisitions
2	<p>Robust district heating systems producing low cost heat mainly for households</p>	<ul style="list-style-type: none"> ❑ Ownership of approximately 730 km of district heating pipelines supplying heat to large number of municipal and residential customers ❑ The direct contracts with final consumers in cities and full ownership of distribution network makes from our CHPs standard utility business
3	<p>Favorable regulatory environment supporting cogeneration and district heating</p>	<ul style="list-style-type: none"> ❑ Significant support for cogeneration assets from both national and EU legislation ❑ Highly efficient cogeneration with strict emission limits helping to meet country's energy efficiency and environmental protection goals ❑ All new or reconstructed buildings are obliged by the law on air protection to connect to district heating (if possible from technical and economical perspective)
4	<p>Stable returns and high entry barriers</p>	<ul style="list-style-type: none"> ❑ District heating is a regulated business with very high barriers to entry due to limited possibility of replicating the existing heating systems ❑ The segment reported Cash Conversion (excl. WoCa & Tax)² of 48% for FY 2023 (FY 2022: 83%), the decrease was mainly affected by investments related to conversion projects to replace lignite technologies, which are expected to continue in the upcoming years ❑ As of the beginning of February 2024, the Heat Infra entities had 1.4 TWh of net power production hedged, while 1.5 mt of CO₂ emissions was covered by hedged emission allowances for the period 2024-2025³
5	<p>Renewable heat as a cornerstone of long-term strategy</p>	<ul style="list-style-type: none"> ❑ EPIF believes that district heating represents a cost-effective way to distribute heat from low-emission sources, especially in large cities ❑ EPIF aims to replace the lignite units with a balanced mix of highly efficient gas-fired plants compatible with hydrogen, biomass units and waste incinerator plants. Total planned gross Capex of EUR 1.3bn shall be covered by subsidy of EUR 0.7bn ❑ Tenders for new technologies (gas-fired units as well as waste incinerator plants) have commenced with all investment subsidy applications submitted and some already approved ❑ Biomass and renewable waste seen as key non-fossil fuels in the medium term for centralized heat generation, while green gases (biogas, hydrogen) expected to play an important role in the long term

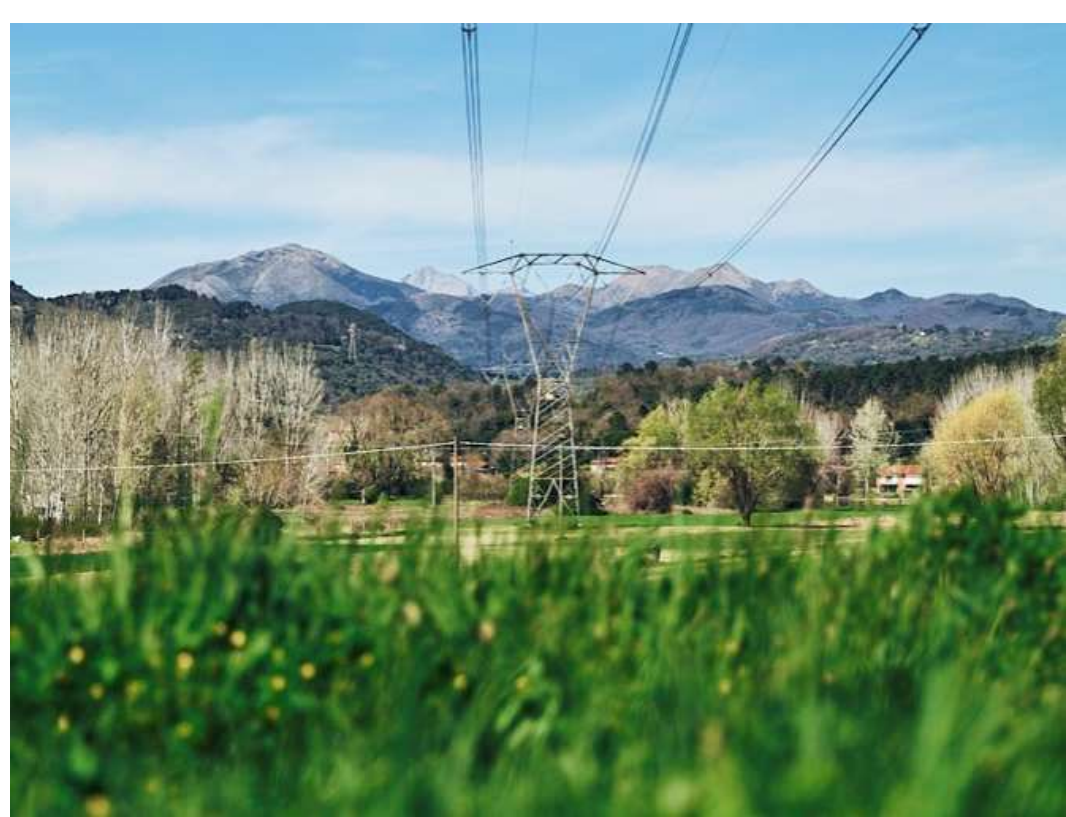
1. For definition of Adjusted EBITDA please see slide 32

2. Cash Conversion (excl. WoCa & Tax) represents Adjusted EBITDA less CAPEX (Acquisition of property, plant and equipment, investment property and intangible assets (without emission allowances and goodwill) as presented in the Operating segments information in the consolidated financial statements of the Group) divided by Adjusted EBITDA

3. mt = 1 million tons; For comparison, the existing heating plants produced 1.5 TWh of net power and consumed 2.1 mt of emission allowances in FY 2023

Agenda

- 1) Executive summary
- 2) Group performance
- 3) Financial profile update
- 4) Business segment highlights
- 5) **Wrap-up**
- 6) Appendix



Stable financials, strategic asset base and outlook

Strong financials

- ❑ Resilience of the Group confirmed by **solid performance** in FY 2023 despite continued deterioration of the transmission segment
- ❑ Substantial **liquidity position** with **EUR 1,695m** of Cash and cash equivalents and **EUR 854m** of undrawn credit facilities across the Group as of 31 December 2023
- ❑ **Proportionate Net Leverage Ratio** of the Group (2.7x as of 31 December 2023) met the management's **target to be below 3.5x** which is to apply until the market uncertainties subside
- ❑ **Commitment** to maintaining a financial profile consistent with **investment-grade ratings**

Strategic asset base

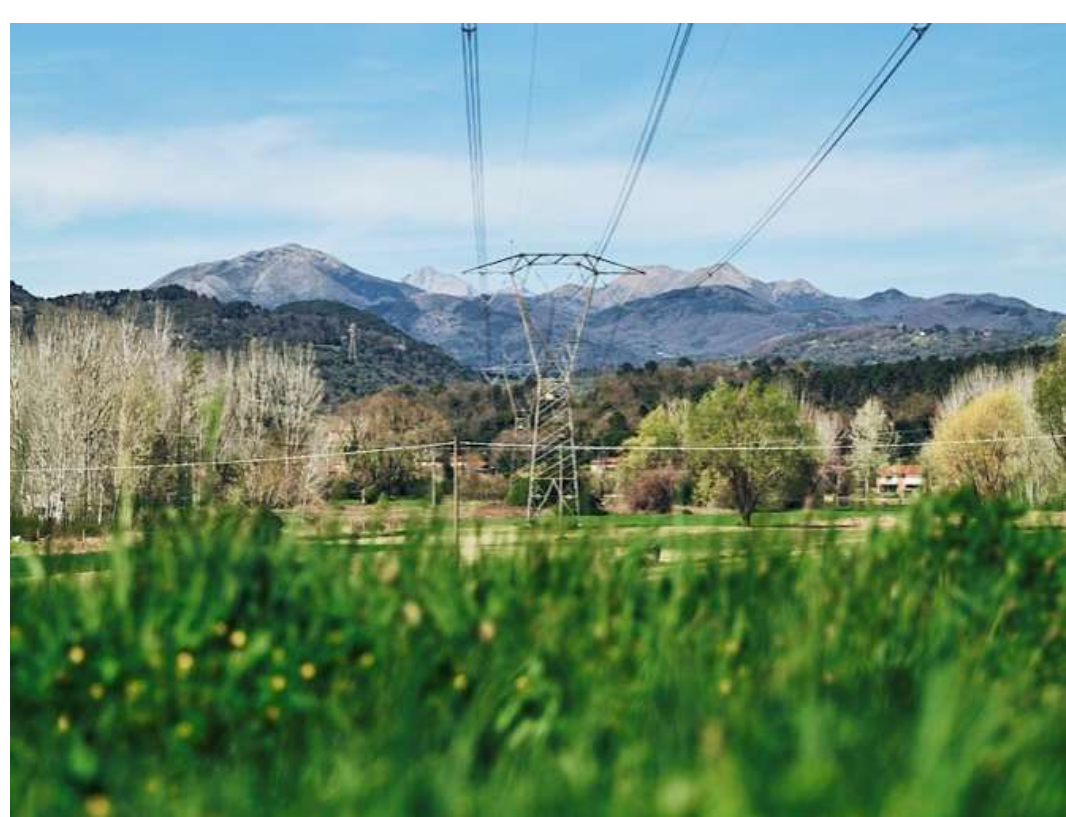
- ❑ Critical infrastructure assets in stable and developed markets with **leading positions** in the respective areas of operation or region, with major **subsidiaries co-owned by Slovakia**
- ❑ **Diversified portfolio** across four segments with strong natural hedges among them
- ❑ **Gas storage** confirmed its **increased importance** to the Group and played a substantial role in mitigating the deteriorated performance of the Gas transmission

Outlook

- ❑ Significant part of **EBITDA** related to fully **regulated and/or long-term contracted** businesses
- ❑ **Dividends restoration is anticipated** in 2024, likely through multiple payments to gradually approach the target level of 3.5x. This dividend decision factors in the near-term risks, particularly those associated with the gas transit contract between Russia and Ukraine expiring at the end 2024
- ❑ EPIF and its subsidiaries keep **monitoring the current situation** on the market on an ongoing basis, including the current geopolitical risks that are outside of its control

Agenda

- 1) Executive summary
- 2) Group performance
- 3) Financial profile update
- 4) Business segment highlights
- 5) Wrap-up
- 6) **Appendix**



Appendix – Adjusted EBITDA (I/IV)

- ❑ **EBITDA** represents the profit (loss) for the period before income tax expense, finance expense, finance income, change in impairment losses on financial instruments and other financial assets, share of profit (loss) of equity accounted investees, net of tax, gain (loss) on disposal of subsidiaries, depreciation of property, plant and equipment and amortisation of intangible assets, negative goodwill and impairment charges relating to property, plant and equipment and intangible assets. EBITDA corresponds to Underlying EBITDA presented in EPIF's Annual Financial Report for the Year 2023
- ❑ **Adjusted EBITDA** represents EBITDA adjusted by adding back the deficit from the purchase of electricity to cover network losses of the current year stemming from the difference between (i) regulated price of electricity to cover network losses valid for the current year, which is a fixed price calculated in line with the Slovak Decree of the Regulator No. 18/2017 Coll., Article 28, and (ii) spot market price at which electricity is being bought to cover network losses of the current year; and deducting the correction amount (also set by the Slovak Decree of the Regulator No. 18/2017 Coll., Article 28) which is supposed to compensate for the difference between the regulated price and spot market purchase price
- ❑ **Proportionate Adjusted EBITDA** represents Adjusted EBITDA, taking into consideration the proportionate ownership of the Company in its subsidiaries
- ❑ **Pro-forma Adjusted EBITDA** equals Adjusted EBITDA in FY 2020 excluding (a) EBITDA of PT Group for the period up until October 2020 as it was disposed as of 3 November 2020, and (b) EBITDA of BERT for the period up until November 2020 as it was disposed as of 2 December 2020, in order to present results as if the aforementioned entities were not part of the EPIF Group in 2020, whereas the 2020 IFRS consolidated financial statements include results of PT Group and BERT up to the date of disposals
- ❑ **Proportionate Pro-forma Adjusted EBITDA** means Pro-forma Adjusted EBITDA, taking into consideration the proportionate ownership of EPIF in its subsidiaries
- ❑ The EBITDA, Adjusted EBITDA and Pro-forma Adjusted EBITDA included in this presentation do not represent the terms EBITDA, Adjusted EBITDA or Pro-forma Adjusted EBITDA as may be defined by any documentation for any financial liabilities of the EP Infrastructure Group

Appendix – Adjusted EBITDA calculation (II/III)

□ EBITDA and Adjusted EBITDA calculation (FY 2023):

FY 2023 in €m	Gas transmission	Gas and Power Distribution	Gas Storage	Heat Infra	Total Segments	Other	Holding entities	Intersegment-eliminations	Consolidated financial information
Profit (loss) for the year	(6)	274	253	57	578	(3)	403	(443)	535
Income tax expenses	(2)	87	81	21	187	-	1	-	188
Finance income	(5)	(28)	(16)	(17)	(66)	-	(502)	494	(74)
Finance expense	35	19	8	3	65	1	88	(51)	103
Change in Impairment losses on financial instruments and other financial assets	-	4	2	-	6	-	-	-	6
Depreciation, amortisation and impairment	117	240	37	60	454	4	1	-	459
EBITDA	139	596	365	124	1,224	2	(9)	-	1,217
EBITDA adjustments	-	-	-	-	-	-	-	-	-
Adjusted EBITDA	139	596	365	124	1,224	2	(9)	-	1,217

Appendix – Adjusted EBITDA calculation (III/III)

□ EBITDA and Adjusted EBITDA calculation (FY 2022):

FY 2022 in €m	Gas transmission	Gas and Power Distribution	Gas Storage	Heat Infra	Total Segments	Other	Holding entities	Intersegment-eliminations	Consolidated financial information
Profit (loss) for the year	168	228	263	115	774	1	504	(578)	701
Income tax expenses	55	74	85	27	241	1	11	-	253
Finance income	(69)	(15)	(2)	(6)	(92)	-	(634)	625	(101)
Finance expense	31	22	4	2	59	1	83	(47)	96
Change in impairment losses on financial instruments and other financial assets	-	-	1	-	1	-	(5)	-	(4)
Depreciation, amortisation and impairment	139	229	28	60	456	2	34	-	492
EBITDA	324	538	379	198	1,439	5	(7)	-	1,437
Network losses correction	-	18	-	-	18	-	-	-	18
Adjusted EBITDA	324	556	379	198	1,457	5	(7)	-	1,455

Appendix – Adjusted Free Cash Flow calculation

□ **Adjusted Free Cash Flow** represents Cash flows generated from (used in) operations, less Income taxes paid and less Acquisition of property, plant and equipment, investment property and intangible assets, less Purchase of emission rights and disregarding Changes in restricted cash as presented in the Consolidated statement of cash flow of the Group, adjusted for: (i) EBITDA effect of the SOT, (ii) working capital impact of the SOT, (iii) EBITDA effect of the network losses correction, (iv) working capital impact of the network losses correction

€m	FY 2023	FY 2022	FY 2021	FY 2020	FY 2019	FY 2018
	12-month period	12-month period	12-month period	12-month period	12-month period	12-month period
Cash flows generated from (used in) operations	1,803	1,322	1,338	1,816	1,620	1,535
Income taxes paid	(300)	(229)	(266)	(382)	(228)	(292)
Acquisition of property, plant and equipment, investment property and intangible assets	(202)	(165)	(151)	(209)	(220)	(192)
Purchase of emission rights	(227)	(193)	(112)	(53)	(54)	(26)
excluding Change in restricted cash	-	-	(1)	3	(1)	4
Reported FCFF	1,074	735	808	1,175	1,117	1,029
excluding SOT (EBITDA effect)	-	-	1	(90)	(50)	41
excluding SOT (working capital effect)	(11)	(64)	(24)	(39)	40	(40)
excluding Network losses correction (EBITDA effect)	-	18	-	-	-	-
excluding Network losses correction (working capital effect)	(47)	47	-	-	-	-
Adjusted FCFF	1,016	736	785	1,046	1,107	1,030

Appendix - Capital structure related definitions

- ❑ **Gross debt** of the Group represents the sum of indebtedness calculated as the total of current and non-current Loans and borrowings, adjusted to exclude unamortized transactions cost, premiums, discounts and accrued interest. For avoidance of doubt, the Gross Financial Indebtedness does not include mark to market of hedging instruments as it is reported under Financial instruments and financial liabilities and Financial instruments and other financial assets
- ❑ **Net debt** represents Gross debt less Cash and cash equivalents (as included in the Consolidated financial statements of the Group). **Proportionate Net Debt** represents Net Debt, taking into consideration the proportionate ownership of EPIF in its subsidiaries
- ❑ **Net Leverage Ratio** represents Net Debt divided by Adjusted EBITDA. **Proportionate Net Leverage Ratio** represents Net Leverage Ratio, taking into consideration the proportionate ownership of EPIF in its subsidiaries
- ❑ The terms Gross debt, Net debt, Proportionate Net Debt, Net leverage Ratio and Proportionate Net leverage Ratio do not represent similarly named measures as may be defined and included in any documentation for any financial liabilities of EP Infrastructure Group

Contact

EP Infrastructure, a.s.

Pařížská 26

110 00 Praha 1

Czech Republic

Tel.: +420 232 005 100

Fax: +420 232 005 400

Mail: investorrelations@epinfrastructure.cz

Web: www.epinfrastructure.cz

